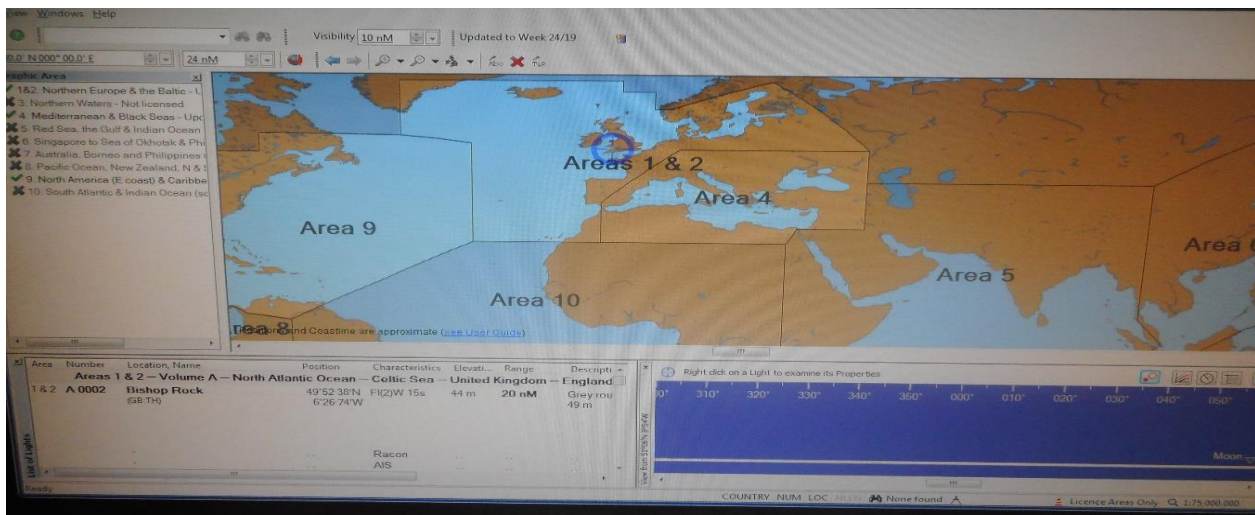




## Tip of the Week – Preventing Risk



### CASE STUDY #34 PaSea H.EL.M.E.T. Marine Risk Assessment

**RISK ELEMENT:** Nautical Publications

**MRA FINDING:** Area 5 (the Red Sea) for List of Lights and Total Tides was not purchased even though the vessel was navigating in this area.

**REF. SOLAS V/2, 19.2.1.4, 27, BPG 2.3.1, TMSA 5.3.1**

**AS A RESULT THE TIDES OF AREA 5 WERE UNKNOWN AND NOT INCLUDED IN THE CALCULATIONS FOR THE VESSEL'S UNDER KEEL CLEARANCE. THIS COULD LEAD TO THE VESSEL'S GROUNDING IN CASE THE NAVIGATION WAS IN SHALLOW WATERS.**

**IT IS IMPORTANT TO ENSURE THAT ALL PUBLICATIONS RELEVANT TO THE VOYAGE ARE AVAILABLE AND UPDATED PRIOR TO A VESSEL'S DEPARTURE.**

**IF A PUBLICATION IS NOT AVAILABLE AND CANNOT BE OBTAINED, THE COMPANY MUST BE NOTIFIED PRIOR TO THE VESSEL'S DEPARTURE FROM THE PORT.**

## Making Prevention A HABIT!