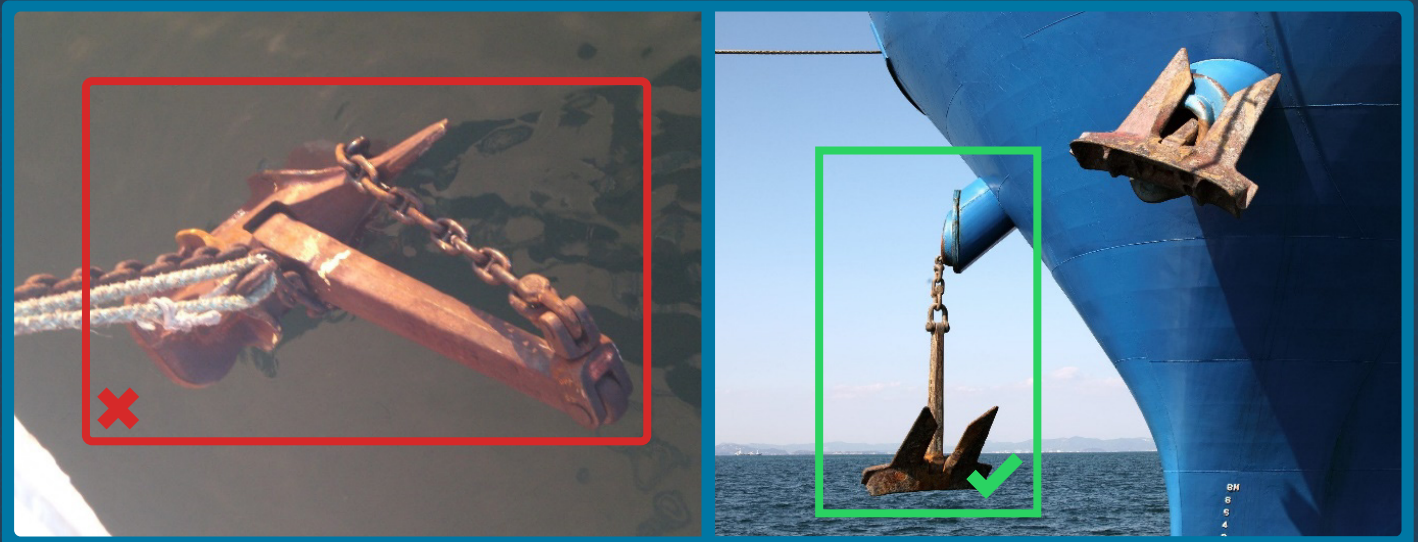


ENTANGLED ANCHOR CHAIN



- HELMET ELEMENT 7 ‘Mooring and Anchoring’ – Item 1 ‘Safe Mooring and Anchoring’
- OCIMF – Mooring Equipment Guidelines (MEG4)
- RIGHTSHIP Inspection Questionnaire – Section 3.23 (Navigation) & 10.18 (Mooring)
- TMSA – Element 6, Section 6A.2.2

INCIDENT: During an onboard PSC preparation by our PAS Assessor, the vessel was anchored for a prolonged period of time. When the crew started heaving up the anchor, the chain was entangled and the anchor could not be secured, resulting in ship delays.

IMPORTANCE OF PROPER ANCHORING OPERATIONS

Anchoring is a routine, but critical shipboard operation, which may result in undesired groundings, collisions and near miss incidents if not performed as per best practices.

PREPARATION FOR ANCHORAGE

- Ensure that passage plan includes provision for anchoring.
- Consider abort parameters and contingency planning.
- Bear in mind the depth and nature of the seabed.
- Study the weather forecasts and understand local tides and currents.
- Perform a pre-anchoring meeting with involved parties, in order to assess all potential risks.
- Consider the fact that when the anchor is let go, while controlled by the brake, an immense risk of chain’s entanglement arises.

SUGGESTIONS

- Monitor ECDIS plotted positions on hourly basis in order to check the vessel’s movement during her stay at the anchorage.
- Heave up the anchor to avoid knotting the chain, during prolonged stay at anchorage.
- Monitor weather conditions and heave up the anchor, prior to weather deterioration.
- Carry out inspections and maintenance as per Company’s PMS, in order to prevent equipment’s poor performance and identify possible hazards.
- Ensure that ship’s personnel are familiar with procedures regarding safe anchoring operations.

HEAD OFFICE

5 Artemidos Avenue, 6th Floor,
Artemidos Tower, 6020, Larnaca, Cyprus
Tel: +357 24819800

PREVESEA

91 Akti Miaouli Str.,
85 38 Piraeus, Greece
Tel: +30 210 6437637

PREVENTION AT SEA GERMANY

Pestalozzistraße 25,
22305 Hamburg, Germany
Tel: +49 40226329710

✉ info@preventionatsea.com
🌐 www.preventionatsea.com

